

Measurable Objectives for Dauphin County	Baseline (7/1/16)	FY 17	FY 18	Target (6/30/2019)
<b>Access to Health Services</b>				
Percent of Adults 18-64 Without Medical Insurance	14%	11.2%	7.7%	13%
Percent of Children Under Age 19 Without Medical Insurance	6%	4.5%	4.5%	5%
Percent of Adults Who Report Poor or Fair Health	16%	14%	15%	12%
<b>Behavioral Health</b>				
Average Number of Poor Mental Health Days Reported in the Past 30 Days	4	3.7	4.1	2.8
<b>Healthy Lifestyles</b>				
Percent of Adults Who are Obese (BMI of >=30)	31%	33%	31%	29%
Percent of Adults Who are Current Smokers	19%	17%	17%	15%
Percent of Adults Who Report No Leisure-Time Physical Activity	24%	23%	24%	20%

Data Source: County Health Rankings (<http://www.countyhealthrankings.org>)

Green = Improved    Yellow = Stayed the same this year but improved since baseline    Red = Not Improving

Several Penn State Health Milton S. Hershey Medical Center (PSHMC) initiatives may have contributed to the positive trends:

- Financial Counseling and Insurance Enrollment and CHIP Awareness and Enrollment Programs were offered at community events and in clinical locations to help individuals enroll in insurance programs.
- A Food Box Initiative, in partnership with the Central Pennsylvania Food Bank, was pilot tested in two Penn State Health clinical sites with plans to expand to additional locations. Based on responses to two food insecurity questions, staff members provide healthy food boxes and recipes; connect families to their local food pantry; and assist with completion of Supplemental Nutrition Assistance Program (SNAP) and Women, Infant and Children (WIC) applications for those who qualify. In FY 18, the food boxes reached 126 family members.
- 1,009 people reached through Smoking Prevention and Cessation Programs including 566 members of the LGBTQ community at 13 events. Eighty-nine LGBTQ individuals participated in Carbon Monoxide Testing and 48% of the identified smokers agreed to follow-up to help them quit.

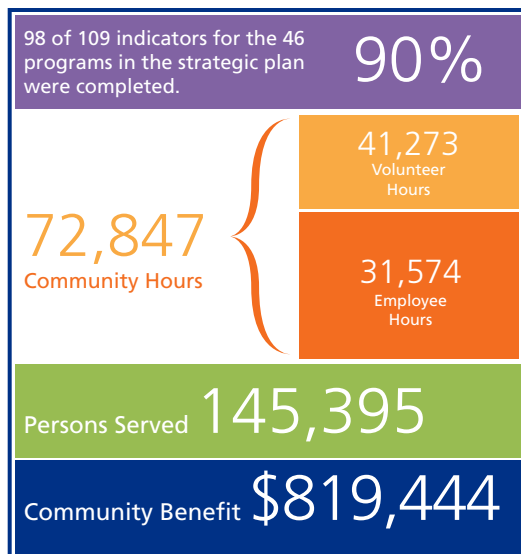
Multiple initiatives are taking place to address objectives that are not improving:

**Behavioral Health**

- ADHD Program
- Autism Spectrum Disorder Program
- Drugs 101
- Drug Take Back
- Opioid Task Force and Stewardship Program

**Healthy Lifestyles – Physical Activity**

- Walking Friendly Community Assessment
- Walk Central PA Walk
- Bike Share Program



# Community Health Needs Assessment 2018 Implementation Strategy

## Second Year Report Card



**Five South Central Pennsylvania Counties**

Cumberland • Dauphin • Lebanon • Perry • York



Program Title	Employee Hours	Volunteer Hours	Community Benefit (\$)	Persons Served
<b>Access to Health Services</b>				
Alder Health Services	70	0	3,837	3,804
CHIP Awareness and Enrollment	2,496	0	116,810	8
Community Check-Up Center	890	0	108,018	1,400
Dental Services	5	0	824	1
Dermatology TeleHealth	72	0	8,449	138
Diabetic Adult Care	20	2	751	42
Diversity Education and Cultural Competency	27	36	0	338
Financial Counseling and Insurance Enrollment	34	0	1,589	228
Healthy Woman Free Mammogram Program	6	0	634	55
Heart and Vascular Health for Adults	107	171	4,514	311
Heart Health for Children	205	0	77,008	3,980
Home Visits to High Risk Populations	12	4	1,741	25
Hope Within Ministries	150	0	25,913	1,000
Influenza Vaccine Administration	1,311	791	65,510	5,418
LionCare at Bethesda Mission	726	1,388	79,425	1,017
LionNet Telestroke	72	0	3,830	423
Medical-Legal Partnership	5	0	711	10
Nepalese and Bhutanese Populations	40	0	1,419	25
Pediatric Trauma Center and Injury Prevention	680	209	5,740	5,701
Prescription Assistance Program	4,160	0	137,854	1,173
Primary Care Physicians and Advanced Practice Clinicians	0	0	0	57
Rural and Urban Cancer Networks	38	0	0	370
Skin Cancer Due to Sun Exposure	137	0	16,122	11,413
SMILES Dental Program Referrals	0	0	326	2
Stroke Outreach	157	2	7,183	1,759
<b>Behavioral Health</b>				
ADHD Program	1,579	145	11,033	53
ASD (Autism Spectrum Disorder)	392	12	8,930	78
Al-Anon	78	0	3,650	520
Attorney General's Task-Force Substance Abuse	16	0	2,164	175
Center for the Protection of Children	64	0	9,307	1,388
Drug Take Back Day	120	140	3,808	501
Drugs 101: What Kids and Parents Need to Know	105	180	936	1,400
Opioid Task Force and Stewardship Program	163	0	13,760	211
<b>Healthy Lifestyles</b>				
Band Together	15,912	35,204	0	81,172
Bike Share Program	30	0	9,552	1,069
Carbon Monoxide Testing and Smoking Cessation in the Community	44	61	2,035	305
Cocoa Pack Program	60	0	2,808	425
Community Garden	500	600	23,247	500
COPD Follow-up Initiatives	17	0	783	96
Farmers Market / Food as Medicine	129	244	4,156	7,436
Food Pantry Health Education / Children's Summer Program	100	331	6,982	2,458
HealthSLAM	0	67	0	437
School Health Assessments	773	1,320	40,262	7,369
Tobacco Intervention Program Support Group	61	24	7,823	138
Walk Friendly Community Assessment	11	45	0	1
Walking Opportunities	0	297	0	965
<b>Totals:</b>	<b>31,574</b>	<b>41,273</b>	<b>\$819,444</b>	<b>145,395</b>