

# Community Health Needs Assessment 2017 Implementation Strategy

## First Year Report Card

The following objectives improved in Dauphin County	Baseline 2016	Actual 2017	Target 2019
Percent of Adults Who Report Poor or Fair Health <sup>1</sup>	16%	14%	12%
Average Number of Poor Mental Health Days Reported in Past 30 Days <sup>1</sup>	4	3.7	3
Number of Persons Admitted for Alcohol Abuse <sup>2</sup>	224	195	192
Percent of Adults Who Report No Leisure-time Physical Activity <sup>1</sup>	24%	23%	20%
Percent of Adults Who Are Current Smokers <sup>1</sup>	19%	17%	15%

Several Penn State Health Milton S. Hershey Medical Center (PSHMC) initiatives may have contributed to these positive trends:

- Food pantry health education programs such as healthy eating and tomato planting, blood pressure and cholesterol screenings, and free flu shots were offered in nine local pantries, reaching people who may not have regular access to preventive health care services.
- PSHMC and Dickinson Law School initiated a Medical-Legal Partnership that provides free advice for legal needs which may negatively impact health, such as advanced directives, housing, domestic violence, medical bills, immigration, education, energy and utility issues and public benefits.
- Al-Anon is a fellowship program offered weekly to provide support and inspire hope for families of alcoholics to change attitudes and aid recovery.
- A Bike Share Program was implemented on the Penn State Hershey campus with immediate plans to extend into the Derry Township community.
- Smoking Prevention and Cessation Programs including carbon monoxide screenings were offered, with a special focus placed on the LGBTQ community; and 29% of participants screened agreed to follow-up services to help them quit.

The following objectives did not improve in Dauphin County	Baseline 2016	Actual 2017	Target 2019
Number of Persons Admitted for Drug Abuse <sup>2</sup>	473	520	405
Percent of Adults Who Are Obese (BMI of >=30) <sup>1</sup>	31%	33%	29%

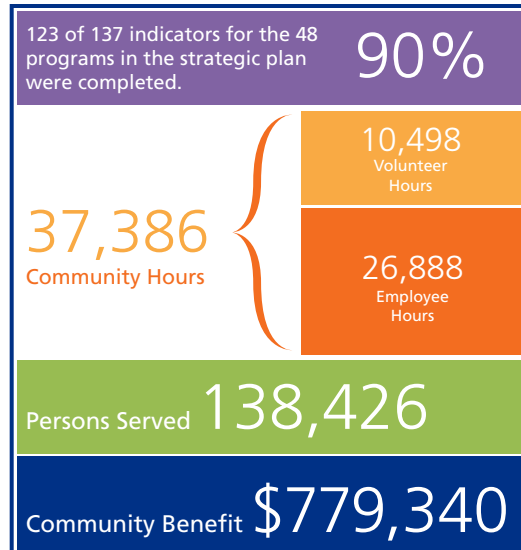
Multiple PSHMC initiatives are taking place to focus on:

#### Drug Addiction Issues & Awareness

- Drugs 101
- Drug Take Back
- Opioid Task Force and Stewardship Program
- Pennsylvania Coordinated Medication-Assisted Treatment Grant for a Hub-and-Spoke Model to Treat Opioid Use Disorder

#### Healthy Eating & Active Lifestyles

- Community Garden
- Farmers' Market in Hershey
- Food as Medicine
- HealthSLAM



**Five South Central Pennsylvania Counties**  
Cumberland • Dauphin • Lebanon • Perry • York

<sup>1</sup>County Health Rankings; <sup>2</sup>County Health Profiles

# Community Health Needs Assessment

## 2017 Implementation Strategy

### First Year Report Card



Program Title	Employee Hours	Volunteer Hours	Net Community Benefit	Persons Served
ADHD Program	180	0	29,135	300
Al-Anon	65	0	3,037	350
Alder Health Services	37	0	3,618	3,804
ALS Telemedicine	624	0	0	106
Anxiety Program	180	0	29,135	232
ASD (Autism Spectrum Disorder)	91	0	0	907
Attorney General's Task-Force Substance Abuse	12	0	562	186
Band Together	14,317	4,193	0	87,090
Bike Share Program	177	0	33,687	158
Center for the Protection of Children	84	0	10,717	698
CHIP Awareness and Enrollment	1	0	0	0
Carbon Monoxide and Pulmonary Function Testing in the Community	17	0	795	746
Cocoa Pack Program	57	0	2,521	390
Community Check-Up Center	890	0	106,133	1,400
Community Garden	500	600	22,912	500
Dental Services	127	0	22,923	0
Dermatology TeleHealth	72	0	8,308	225
Diabetic Adult Care	0	0	0	100
Diversity Education and Cultural Competency	33	27	0	623
Drug and Alcohol Related Community Awareness in Schools	0	2	0	3
Drug Take Back Day	88	99	4,348	340
Drugs 101	72	120	3,364	519
Farmers Market / Food as Medicine	193	237	2,565	7,418
Financial Counseling and Insurance Enrollment	93	0	4,321	443
Food Pantry Health Education / Children's Summer Program	218	476	13,169	2,285
Get Fit Together	3	23	139	15
HealthSLAM	0	136	0	689
Healthy Woman Free Mammogram Program	15	0	1,565	45
Heart and Vascular Health for Adults	101	0	6,791	94
Heart Health for Children	170	250	69,635	1,000
Hope Within Ministries	150	0	31,631	1,000
Influenza Vaccine Administration	347	218	44,195	776
LionCare at Bethesda Mission	760	2,305	84,460	1,635
LionNet Telestroke	197	0	9,638	1,135
Medical-Legal Partnership	52	0	5,295	104
Nepalese and Bhutanese Populations	40	0	1,419	25
Opioid Task Force and Stewardship Program	229	0	17,604	281
Pediatric Trauma Center and Injury Prevention	840	236	6,049	7,245
Prescription Assistance Program	4,160	0	137,125	1,065
Primary Care Physicians and Advanced Practice Clinicians	1	0	0	45
Rural and Urban Cancer Networks	680	135	0	1,665
School Health Assessments	737	1,011	38,222	7,835
Skin Cancer Due to Sun Exposure	33	0	6,609	282
SMILES Dental Program Referrals	6	0	609	2
Stroke Outreach	132	23	5,960	2,283
Tobacco Intervention Program Support Group	102	57	11,144	677
Walk Friendly Community Assessment	6	37	0	1
Walking Opportunities	0	314	0	1,704
<b>Totals: CHNA</b>	<b>26,888</b>	<b>10,498</b>	<b>779,340</b>	<b>138,426</b>